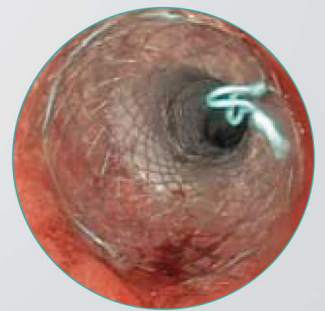
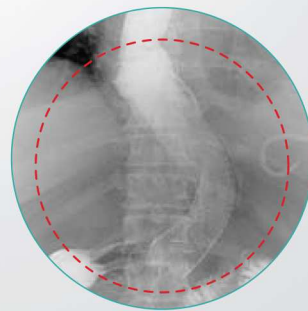
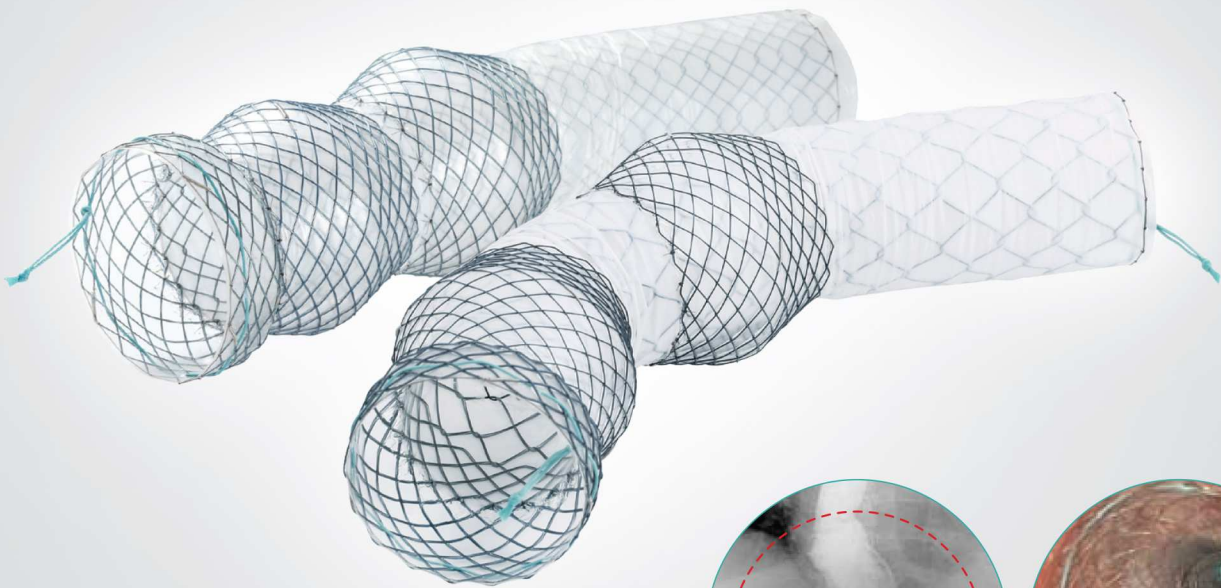


BETA™ Esophageal Stent



"BETA™ stent was inserted to the patient who got fistula after bariatric surgery."

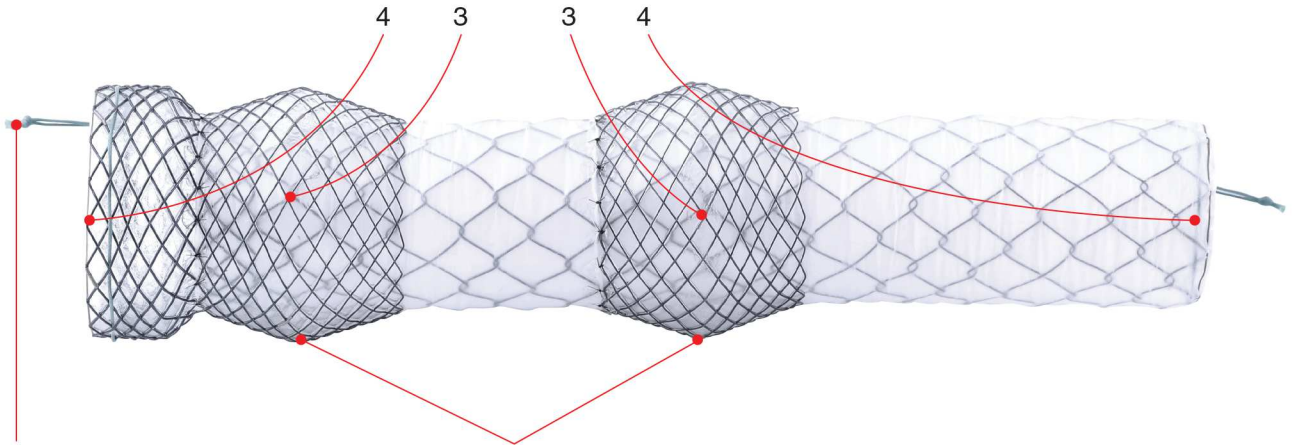
[Provided by Prof. Tom Moreels and Dr. Macke Elisabeth,
University Hospital of Antwerp, Belgium]

Niti-S™ BETA™ Esophageal Stent

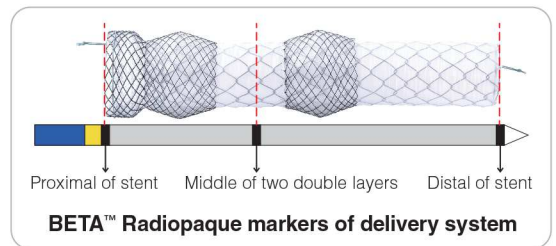
for leak or fistula after bariatric surgery

Features

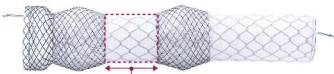
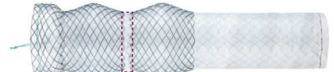
- Radiopaque markers-clearly visible on fluoroscope



- Both distal and proximal retrieval strings help for easy removal or reposition
- Flexible and conformable structure
Unfixed cell construction provides excellent flexibility and conformability to fit intortuous anatomy
- Outer double layers: Silicone covered double layers prevent the risk of migration and any substance to contact the leak or fistula



Ordering Information

Products	Stent			Delivery system	
	Code	Diameter (mm)	Length (cm)	Profile (Fr)	Length (cm)
 [between double layers : 25mm]	EK**--FNT2	18, 20, 22	10, 12, 14, 15, 16, 18, 20	20	70
		24, 26, 28		22	
 [between double layers : 5mm]	EK**--FND2	22	14, 15, 16, 18, 20, 22, 23	20	
		24		22	
		26, 28	14, 15, 16, 18, 20		