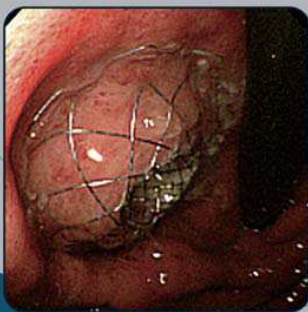
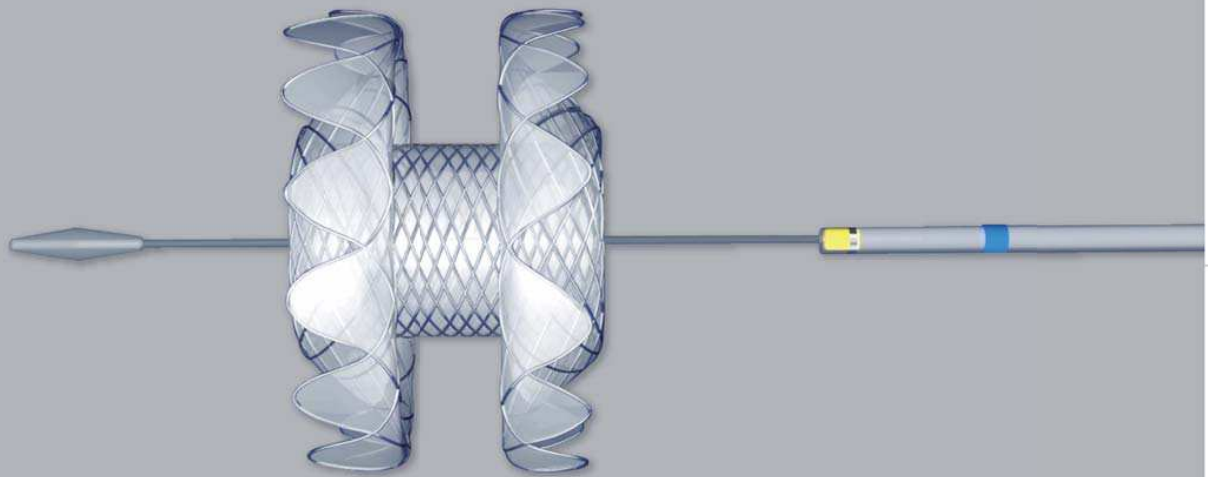




# SPAXUS™ Stent

*for drainage of pancreatic pseudocyst and gallbladder*



*"Placement of the new stent through a cholecystogastrostomy tract with EUS resulted in the complete fusion of the walls, like a single organ, with no leakage."*

- ◀ A. Fully deployment stent on a pancreatic fluid collection
- B. CT showing lumen apposition stent between the stomach and gallbladder

[GASTROINTESTINAL ENDOSCOPY Vol. 79, No. 6 : 2014]

Instrumed Surgical

2180 Dunwin Drive  
Units 5/6  
Mississauga  
Ontario  
L5L 5M8

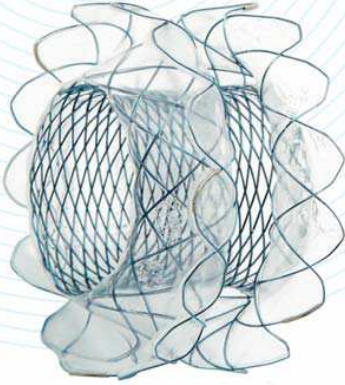
+1 800 667 5653

sales@instrumedurgical.com



# Taewoong Niti-S™ SPAXUS™ Stent

## for the drainage of pancreatic pseudocyst and gallbladder

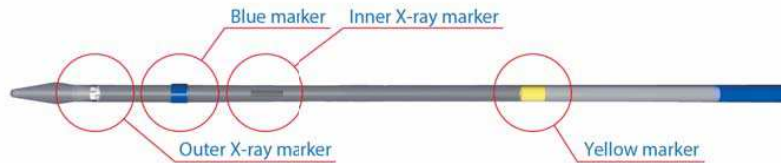


### ● Features

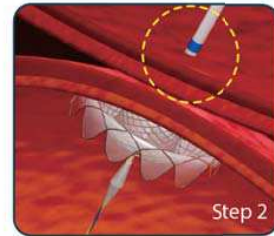
- Dual flange prevents migration and maintains lumen apposition
- Fully silicone coated design to prevent leakage and provide easy removal
- Simple and easy procedure of stent deployment
- Available in various diameter, designed to optimize drainage and Necrosectomy

### ● Radiopaque markers : three at both ends & two in the middle


### ● Deployment process



- Step 1. When the **outer x-ray marker** overlaps with the **inner x-ray marker**  
→ Distal flange is completely opened
- Step 2. When the **blue marker** is visible under endoscopic view  
→ Start opening proximal flange



### ● Ordering Information

Products	Code	Stent			Delivery	
		Body Diameter (mm)	Flare Diameter (mm)	Length (cm)	Profile (Fr)	Usable Length (cm)
	SS0802FW	8	23	2	10	180
	SS1002FW	10	25			
	SS1602FW	16	31			

### Released Article

\* A newly designed fully covered metal stent for lumen apposition in EUS-guided drainage and access: a feasibility study (with videos)  
Gastrointestinal Endoscopy 2014, Vol. 79, No. 6 Jong Ho Moon, MD

\* Novel EUS-guided gastrojejunostomy technique using a new double-balloon enteric tube and lumen-apposing metal stent (with videos)  
Gastrointestinal Endoscopy 2013, Vol. 78, No. 6 Takao Itoi, MD, PhD, FASGE et al.

