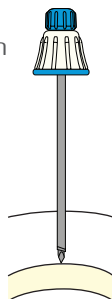


USE OF Bonopty® Adapter 1:3 Revolutions

1 Start procedure as per normal routine.

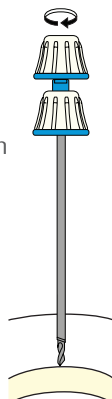
a Press penetration cannula with stylet down to bone.



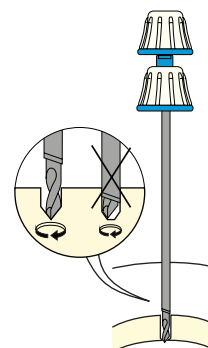
b Replace stylet with eccentric drill.

Rotate a few turns until drill tip catches the bone.

Verify position and direction using diagnostic imaging.



c Retract penetration cannula to expose drill tip beyond penetration cannula to allow the eccentric movement of the drill.



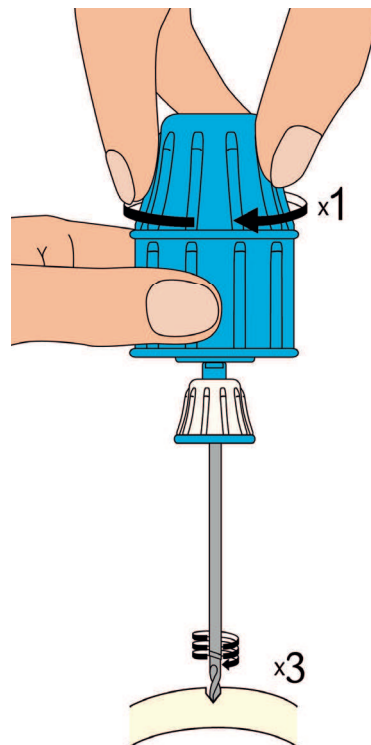
2 Attach Bonopty Adapter 1:3 Revolutions to the drill hub.

Grip the base of the adapter using finger and thumb grip.

Turn the top of the adapter and feel the eccentric drill turning. **Use moderate pressure only.**

After drill has passed through cortical bone, anchor penetration cannula 2-3 mm into cortex.

Remove drill and adapter.



Using Bonopty® Adapter 1:3 Revolutions, one complete turn of the top of the handle...



...corresponds to three turns of the drill tip

3 Insert biopsy needle through the anchored cannula and continue procedure as per normal routine.

Before using Bonopty® Adapter 1:3 Revolutions read the instructions for use which accompany the product for indications, contraindications, warnings and precautions. Bonopty® is a registered trademark of AprioMed AB.

29255 Rev 01 2014-04

Instrumed Surgical
2180 Dunwin Drive
Units 5/6
Mississauga
Ontario
L5L 5M8

+1 800 667 5653
sales@instrumedurgical.com